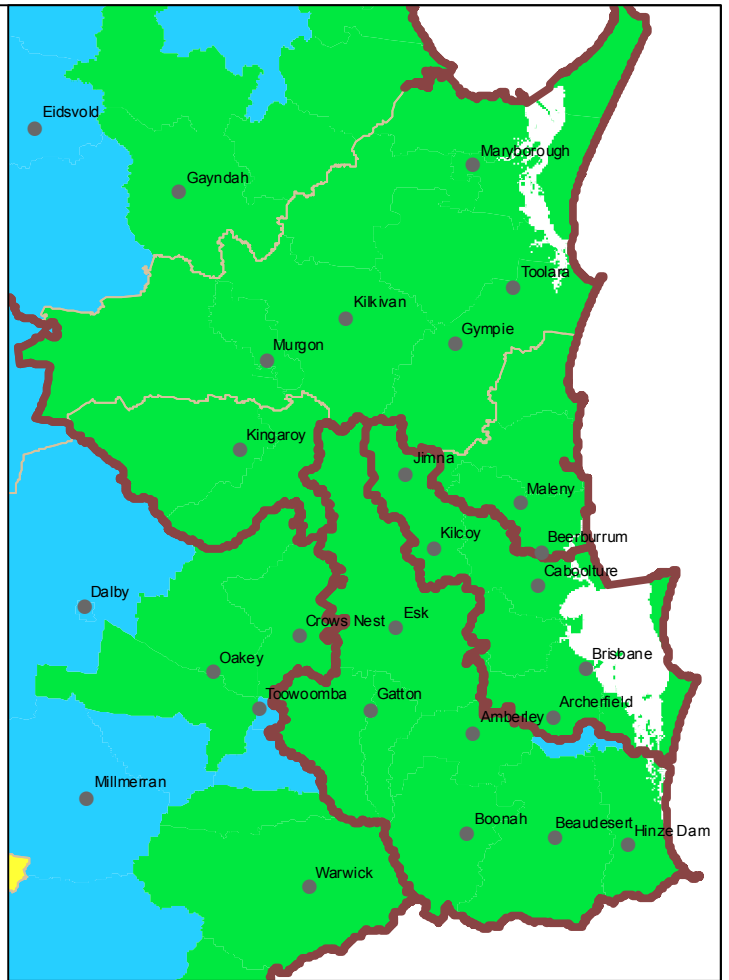
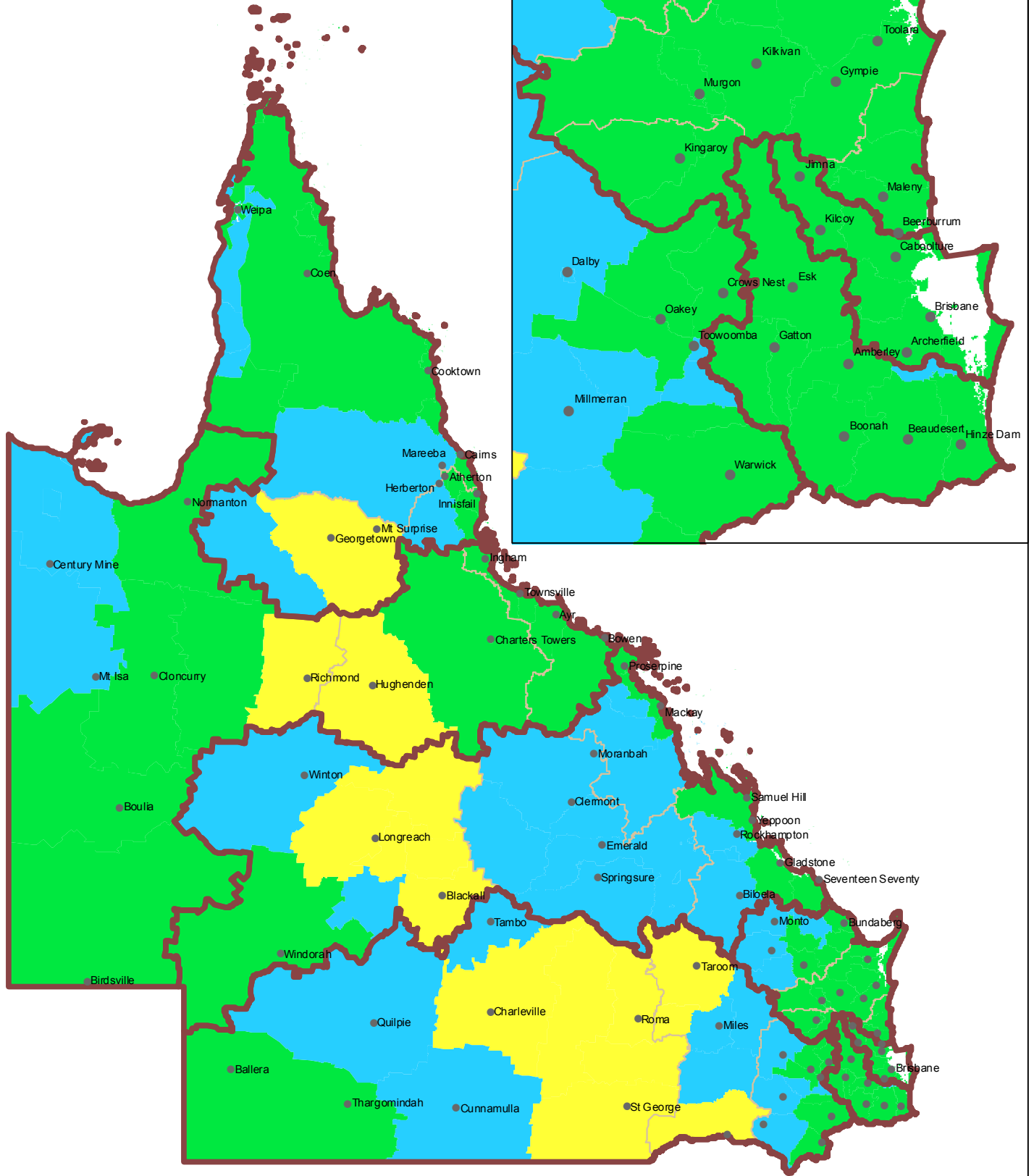


Forest Fire Danger - Day 3 Outlook

(25 November 2009)



Disclaimer
 This data has been prepared for Dept. of Community Safety. Other users must satisfy themselves it is accurate and suitable for their purpose. DCS doesn't accept any liability for any loss or damage that may arise from the use of or reliance on this data.

Produced by the QFRS GIS Unit

- FWO Weather Stations (81)
- QFRS Rural Operations Regions (7)
- QFRS Rural Operations Areas (17)

FDR (FDI)

- Low - Moderate (<12)
- High (12 -25)
- Very High (25 - 50)
- Severe (50 - 75)
- Extreme (75 - 100)
- Catastrophic (>100)

Version: 1.0.0.0 Produced: 22 Nov 2009 - 16:10:17